



Bathtub - Symetrics  
Two-way diverter - polished chrome  
Article number: 29 125 985-00



- Manual diverter
- 1-1/2" hole diameter
- Flange 2-3/8" x 2-3/8"
- 1 inlet 1/2"
- Water flow rate limited to max. 6.2 gpm

**Codes & Standards**

- California Energy Commission (CEC)
- ASME A112.18.1/CSA B125.1

- Fittings group in compliance with DIN 4109: 2
- (ADA)



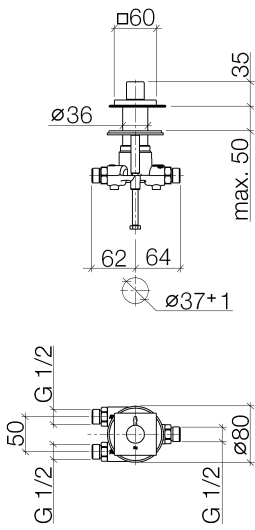
polished chrome

Discontinued items available to order until 31.12.9999



Bathtub - Symetrics  
Two-way diverter - polished chrome  
Article number: 29 125 985-00

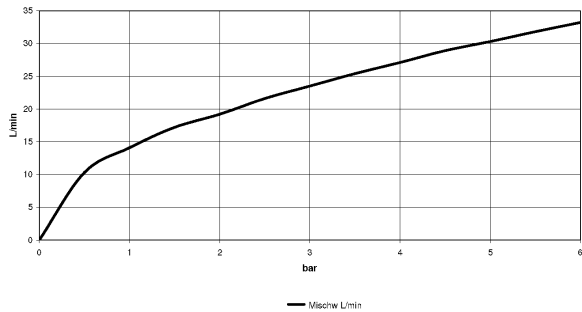
### Dimensional drawing



29 125 985-FF

All dimensions in mm / inch = mm x 0,0394

### Flow rate chart





Bathtub - Symetrics  
Two-way diverter - polished chrome  
Article number: 29 125 985-00

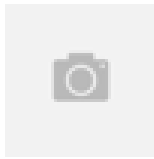
### Other surface finishes



platinum matte  
29 125 985-06



platinum  
29 125 985-08



Brushed Durabrass  
29 125 985-28

More custom finish options are available via special production (xTra Service). Please see our finish matrix for availability and pricing or contact a Dornbracht representative.

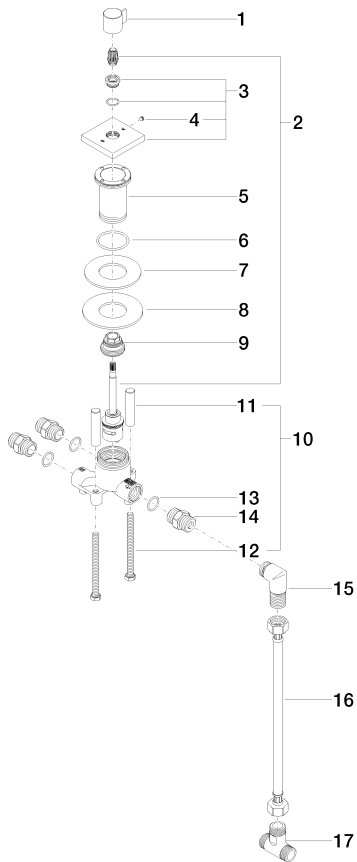


12 509 970-90 0010  
Hose set -



Bathtub - Symetrics  
 Two-way diverter - polished chrome  
 Article number: 29 125 985-00

### Spare parts list



| Number | Item Number        | Designation                                     | Number of units |
|--------|--------------------|---|-----------------|
| 1      | 09 20 98 002-00    | handle  | 1               |
| 2      | 90 90 03 211 00 90 | diverter  | 1               |
| 3      | 04 27 98 021 00-00 | rosette   | 1               |
| 4      | 04 31 11 112 00 90 | pin   | 1               |
| 5      | 09 30 01 105 90    | sleeve  | 1               |
| 6      | 09 14 10 143 90    | seal  | 1               |
| 7      | 09 14 05 059 90    | seal  | 1               |
| 8      | 09 30 11 136 90    | disc  | 1               |
| 9      | 09 24 04 223 90    | nipple  | 1               |
| 10     | 04 30 30 153 00 90 | fixing set                                      | 1               |
| 11     | 09 18 40 114 90    | sleeve  | 2               |
| 12     | 09 30 30 153 90    | screw   | 2               |
| 13     | 09 14 10 010 90    | seal  | 3               |
| 14     | 09 24 03 168 10 90 | nipple  | 3               |
| 15     | 09 11 03 009 90    | connection                                      | 1               |
| 16     | 12 501 970 90      | Flexible supply line 1/2"<br>x 1/2" x 11-3/4" - | 1               |
| 17     | 09 17 11 051 90    | adaptor   | 1               |